

BAKER • HOGAN • HOUX

ARCHITECTURE & PLANNING /A.I.A./P.C.

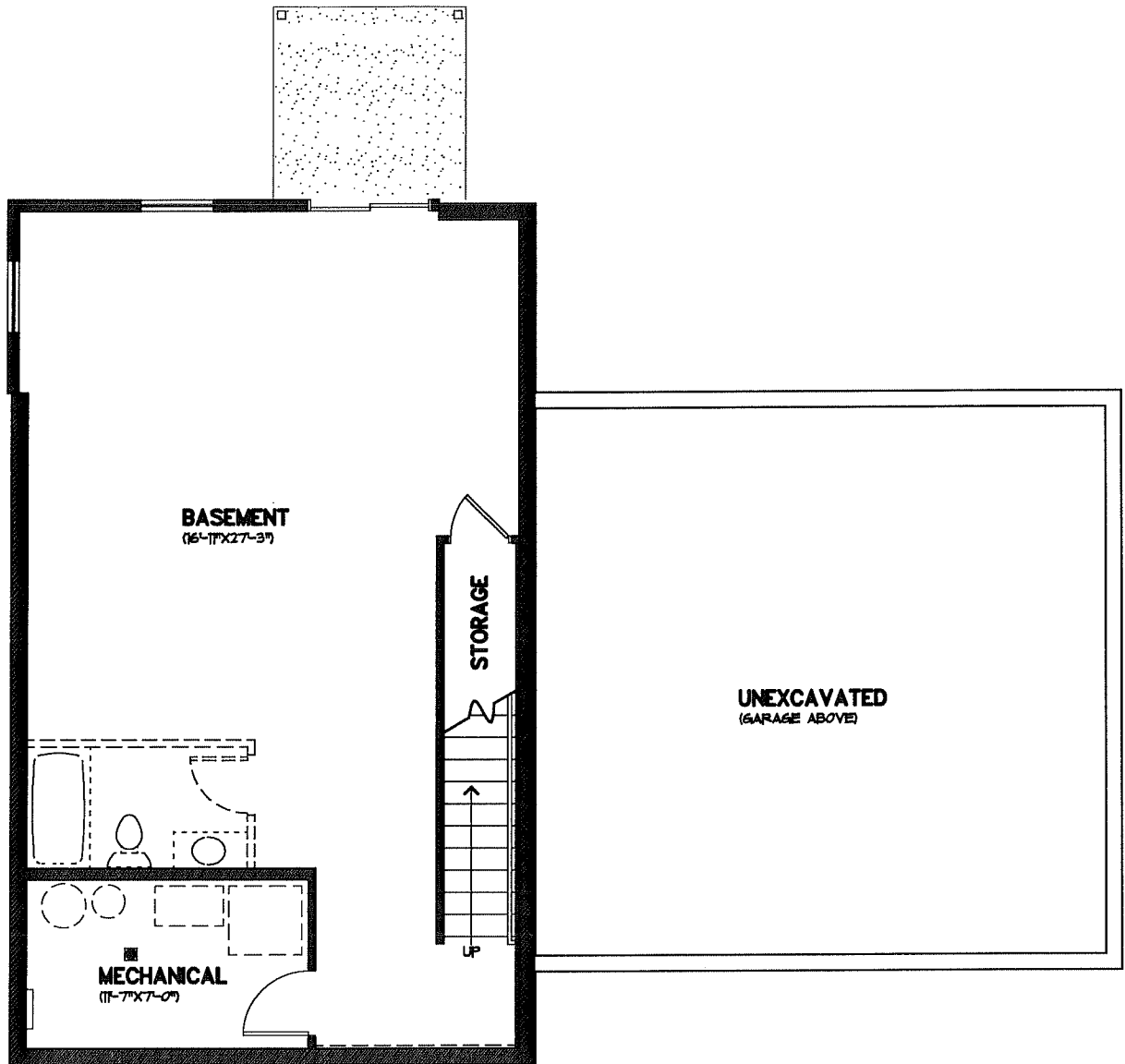
P.O. BOX 185, 237 3RD AVENUE SE, PERHAM, MINNESOTA 56573 (218) 346-4505

MMCDC HOMES - SOMERSET III (REVERSED)

0610/SOMERSET3.VWF
JOB NO: 40610
DATE: 7/3/06
DRAWN BY: CMB
CHECKED BY: AJS

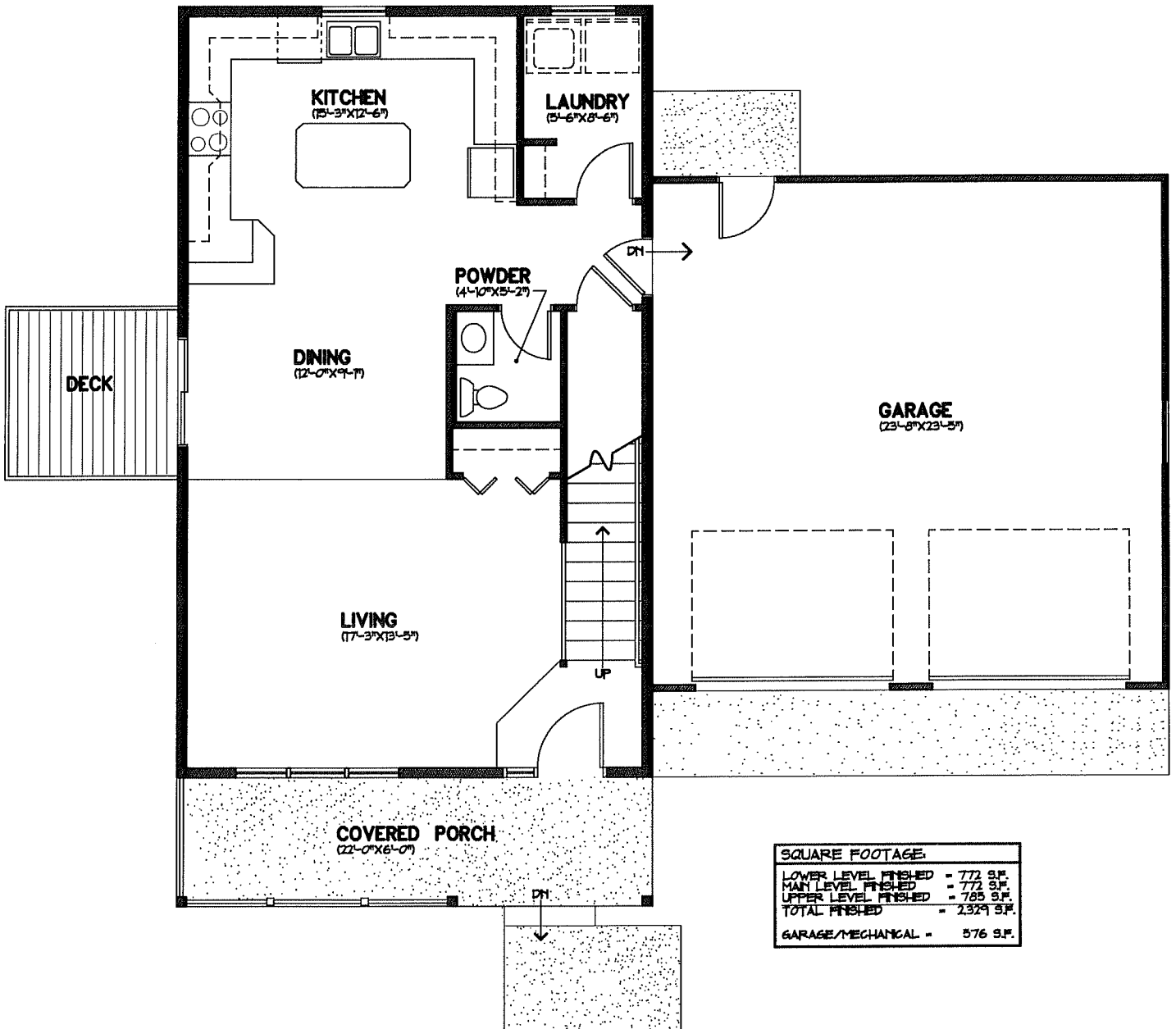
SHEET NUMBER:

A-2

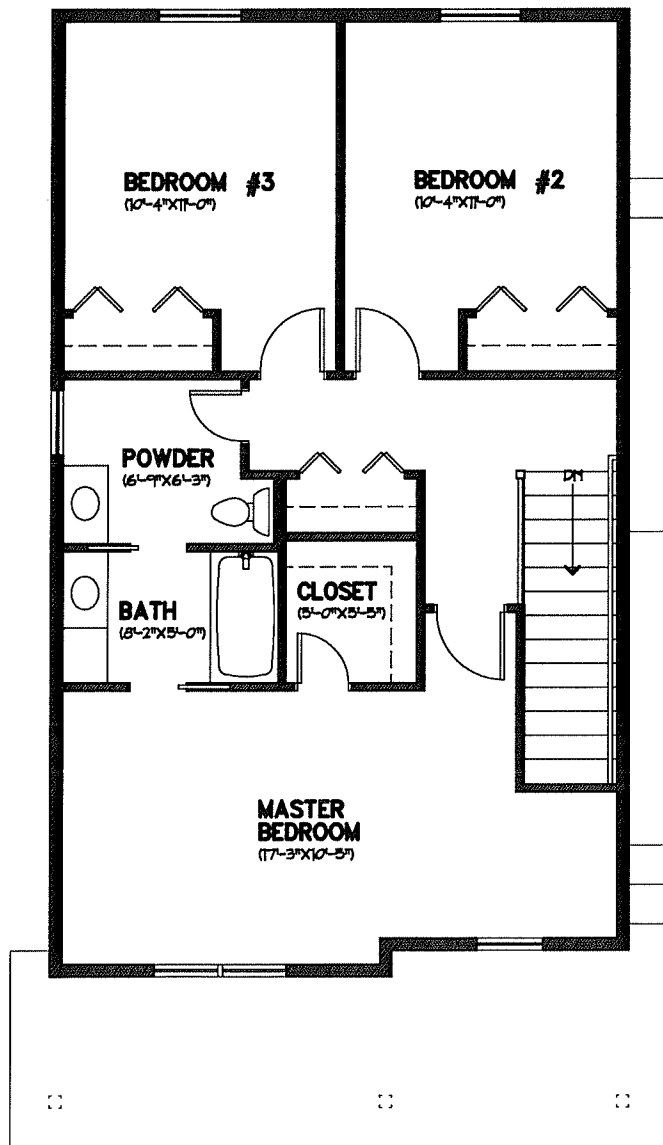


SQUARE FOOTAGE	
LOWER LEVEL FINISHED	= 772 S.F.
MAIN LEVEL FINISHED	= 772 S.F.
UPPER LEVEL FINISHED	= 785 S.F.
TOTAL FINISHED	= 2,329 S.F.
GARAGE/MECHANICAL	= 576 S.F.

LOWER LEVEL PLAN



MAIN LEVEL PLAN



SQUARE FOOTAGE	
LOWER LEVEL FINISHED	= 772 S.F.
MAIN LEVEL FINISHED	= 772 S.F.
UPPER LEVEL FINISHED	= 785 S.F.
TOTAL FINISHED	= 2329 S.F.
GARAGE/MECHANICAL	= 576 S.F.

UPPER LEVEL PLAN