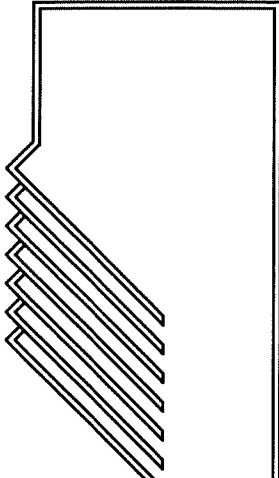


DATE: 7/5/06  
DRAWN BY: CMB  
CHECKED BY: AJS

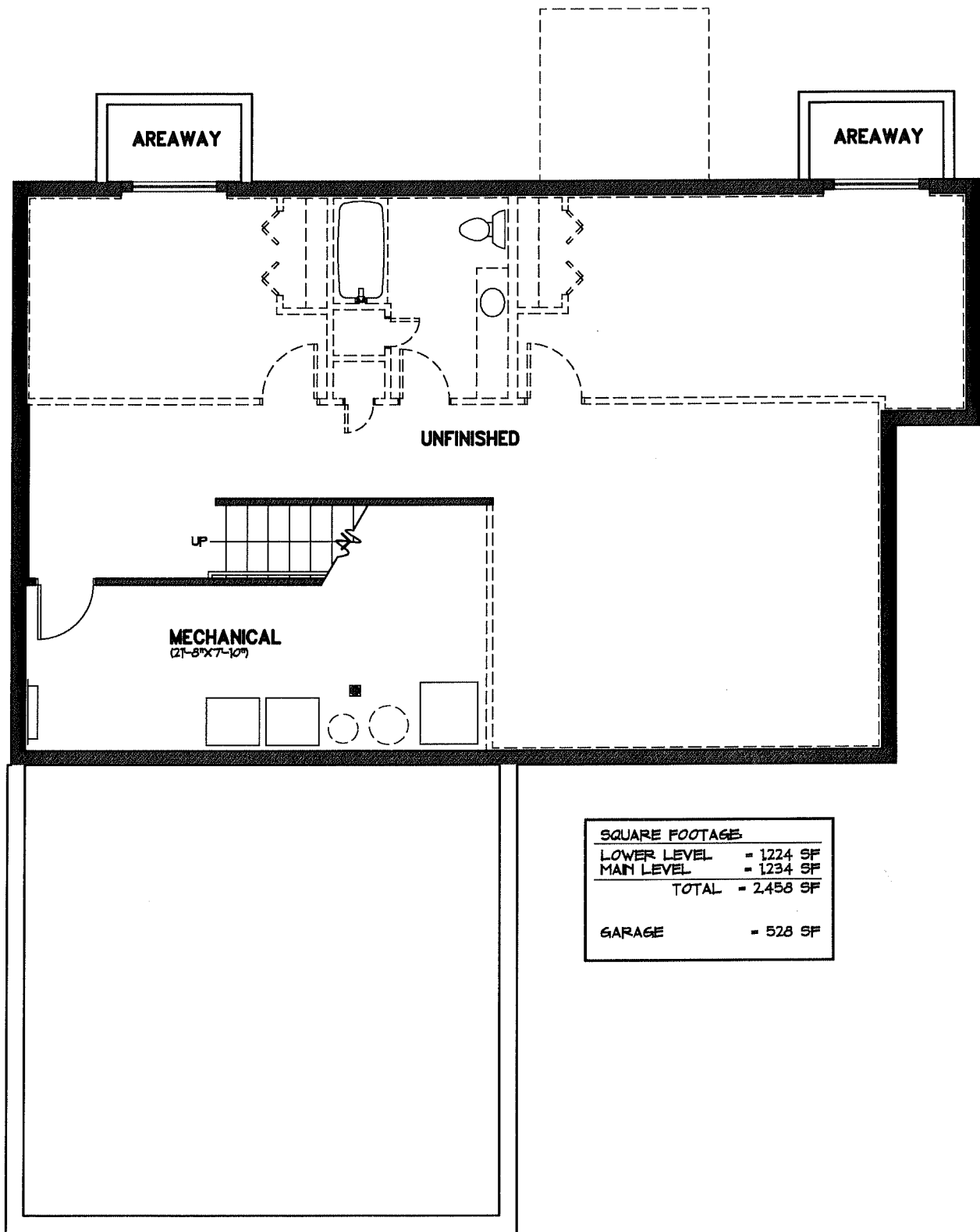


**BAKER ♦ HOGAN ♦ HOUX**  
ARCHITECTURE & PLANNING /A.I.A./P.C.  
P.O BOX 185, 237 3RD AVENUE SE, PERHAM, MINNESOTA 56573 (218) 346-4505

**MMCDC HOMES - PARKLAND 2**

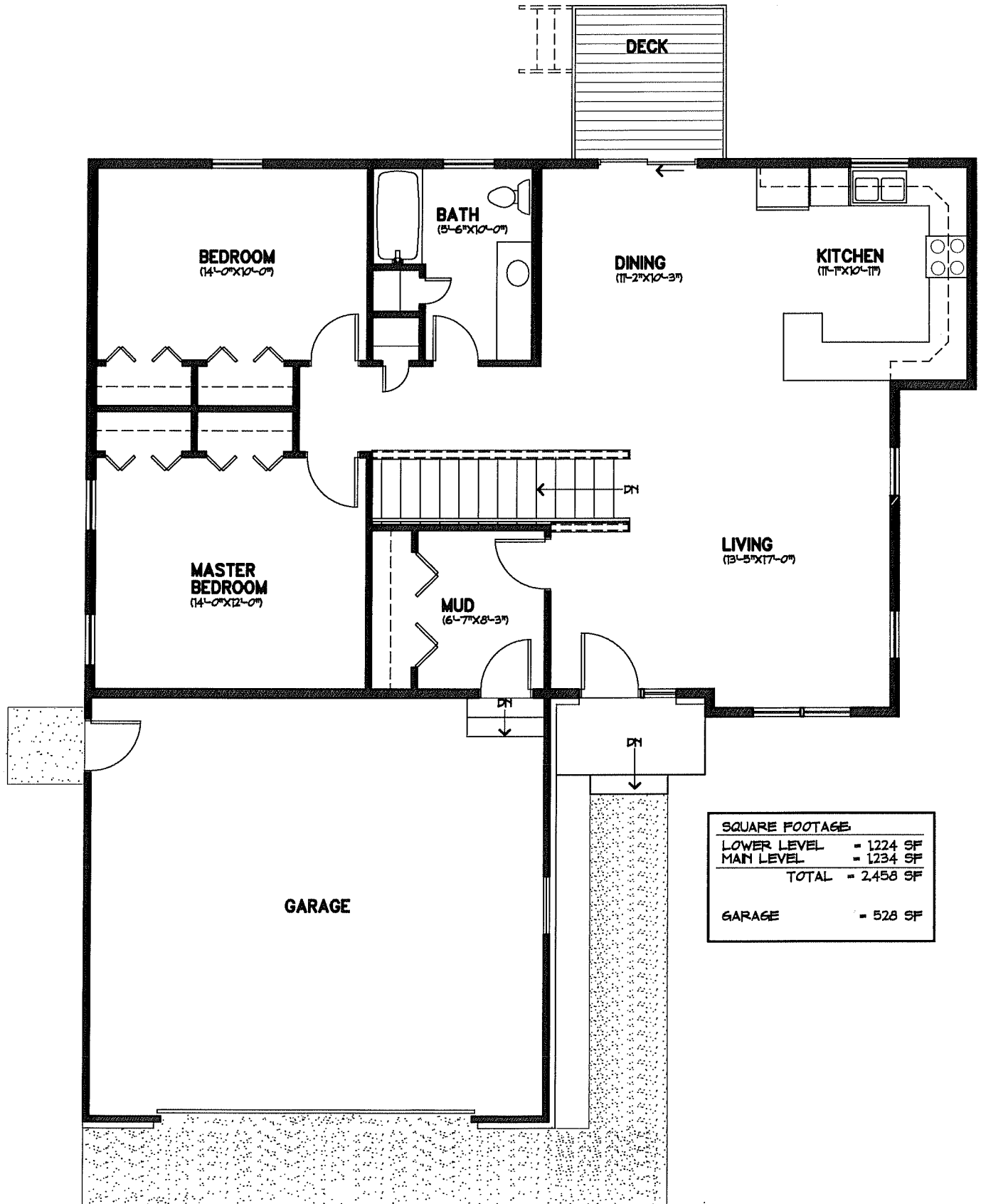
SHEET NUMBER:

**A-1**



SQUARE FOOTAGE	
LOWER LEVEL	= 1224 SF
MAIN LEVEL	= 1234 SF
TOTAL	= 2,458 SF
GARAGE	= 528 SF

**LOWER LEVEL PLAN**



**MAIN LEVEL PLAN**