

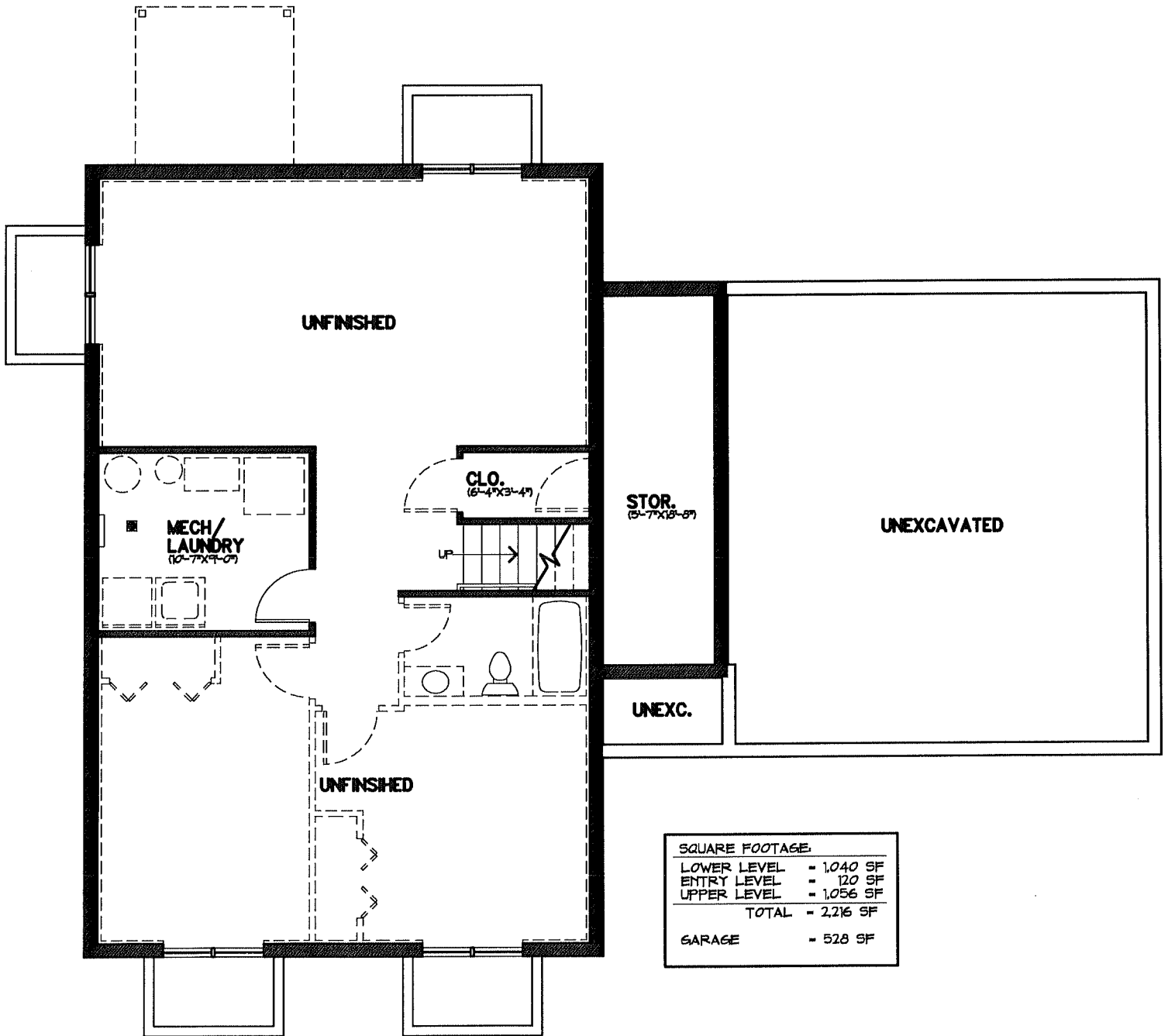
0610/TIMBERCREEKLVWF  
JOB NO: 40610  
DATE: 7/6/06  
DRAWN BY: GMB  
CHECKED BY: AJS

**BAKER • HOGAN • HOUX**  
ARCHITECTURE & PLANNING /A.I.A./P.C.  
P.O BOX 185, 237 3RD AVENUE SE, PERHAM, MINNESOTA 56573 (218) 346-4505

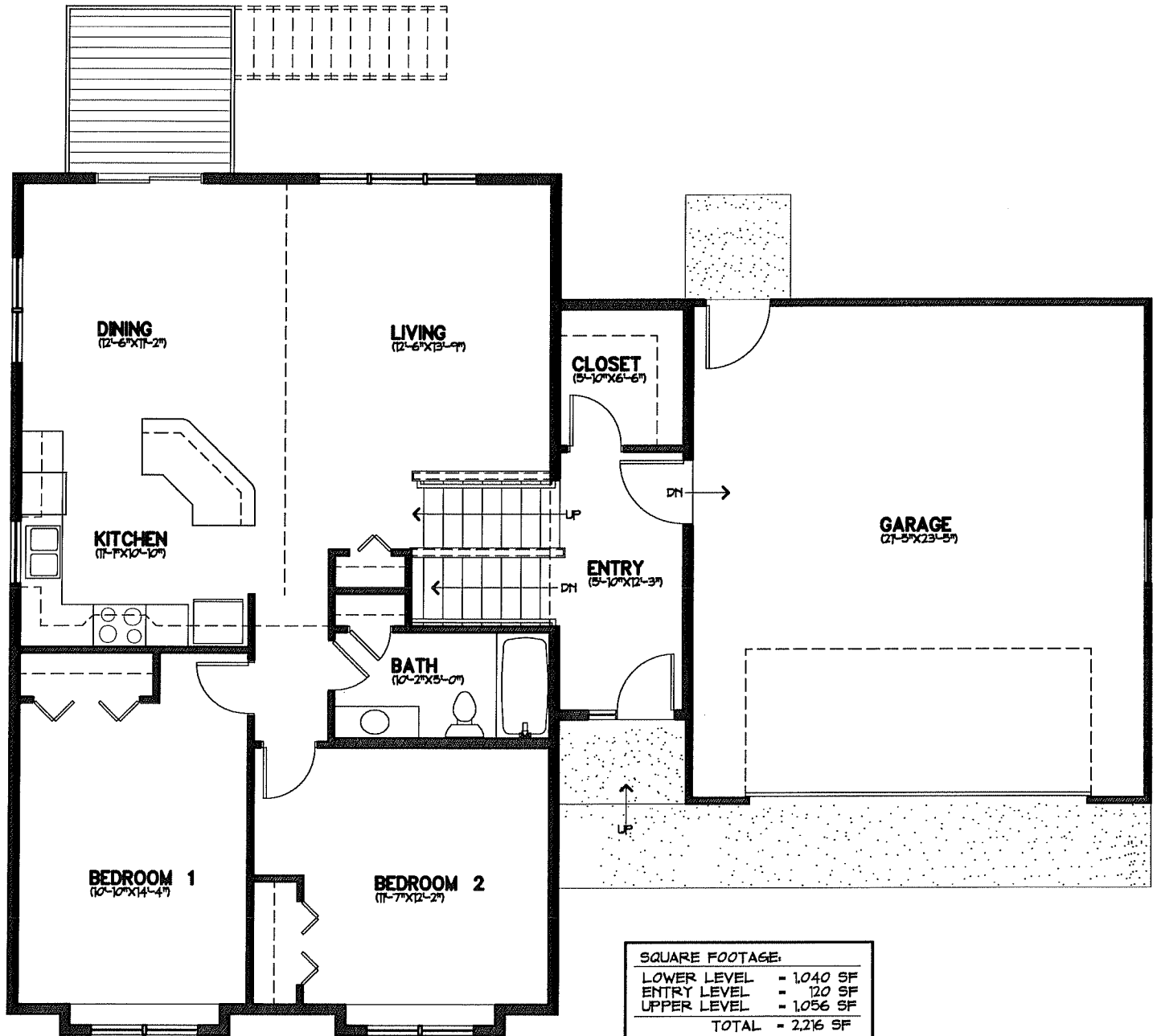
**MMCDC HOMES - TIMBER CREEK I**

SHEET NUMBER:

**A-1**



**LOWER LEVEL PLAN**



**UPPER LEVEL PLAN**