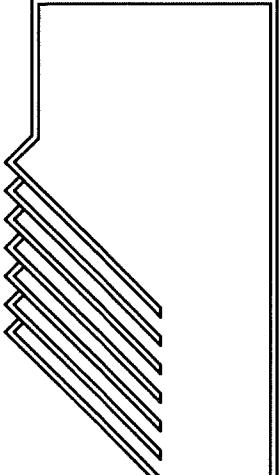


JOB NO: 40610
DATE: 7/3/06
DRAWN BY: CMB
CHECKED BY: AJS

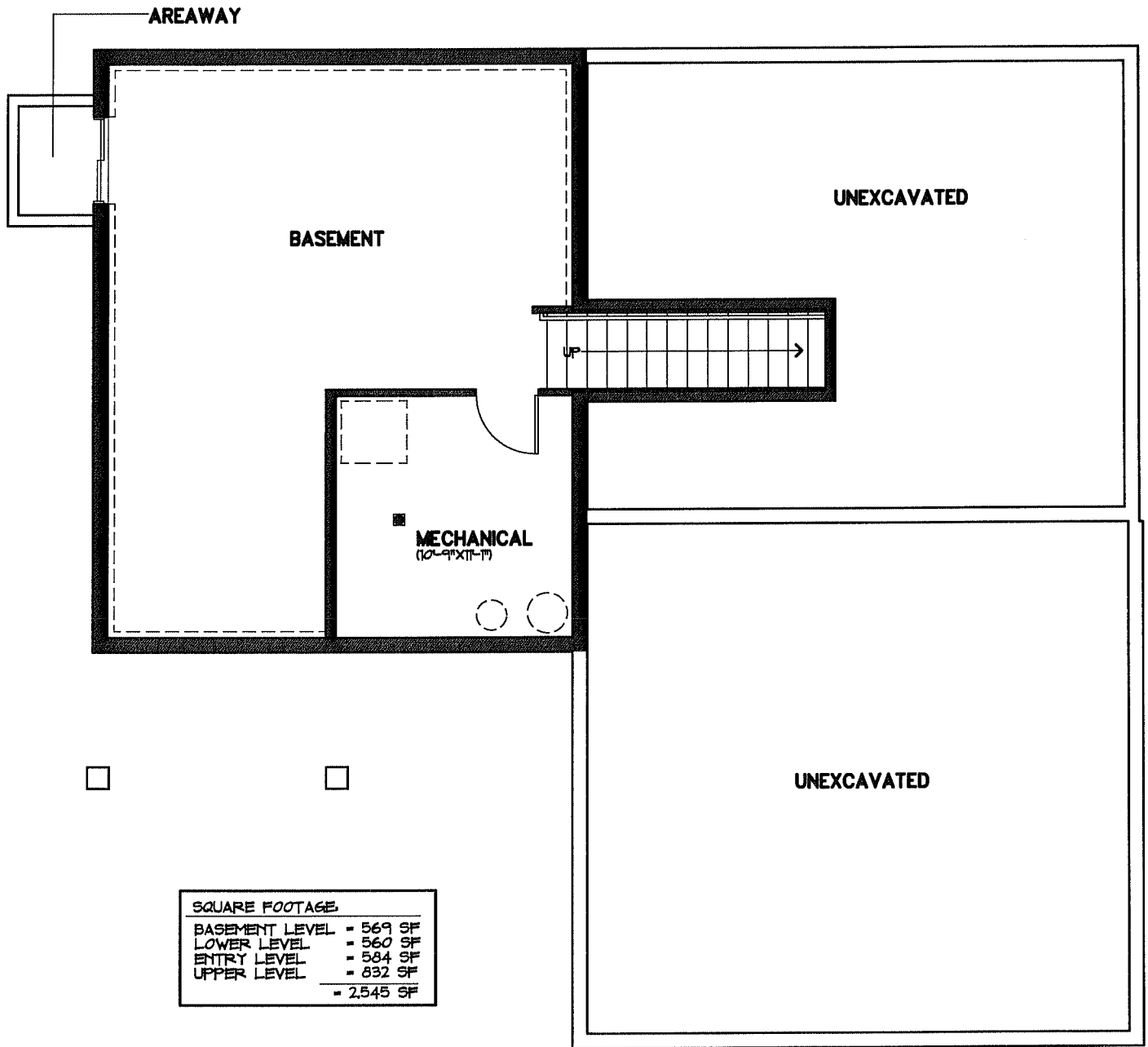


BAKER • HOGAN • HOUX
ARCHITECTURE & PLANNING /A.I.A./P.C.
P.O. BOX 185, 237 3RD AVENUE SE, PERHAM, MINNESOTA 56573 (218) 346-4505

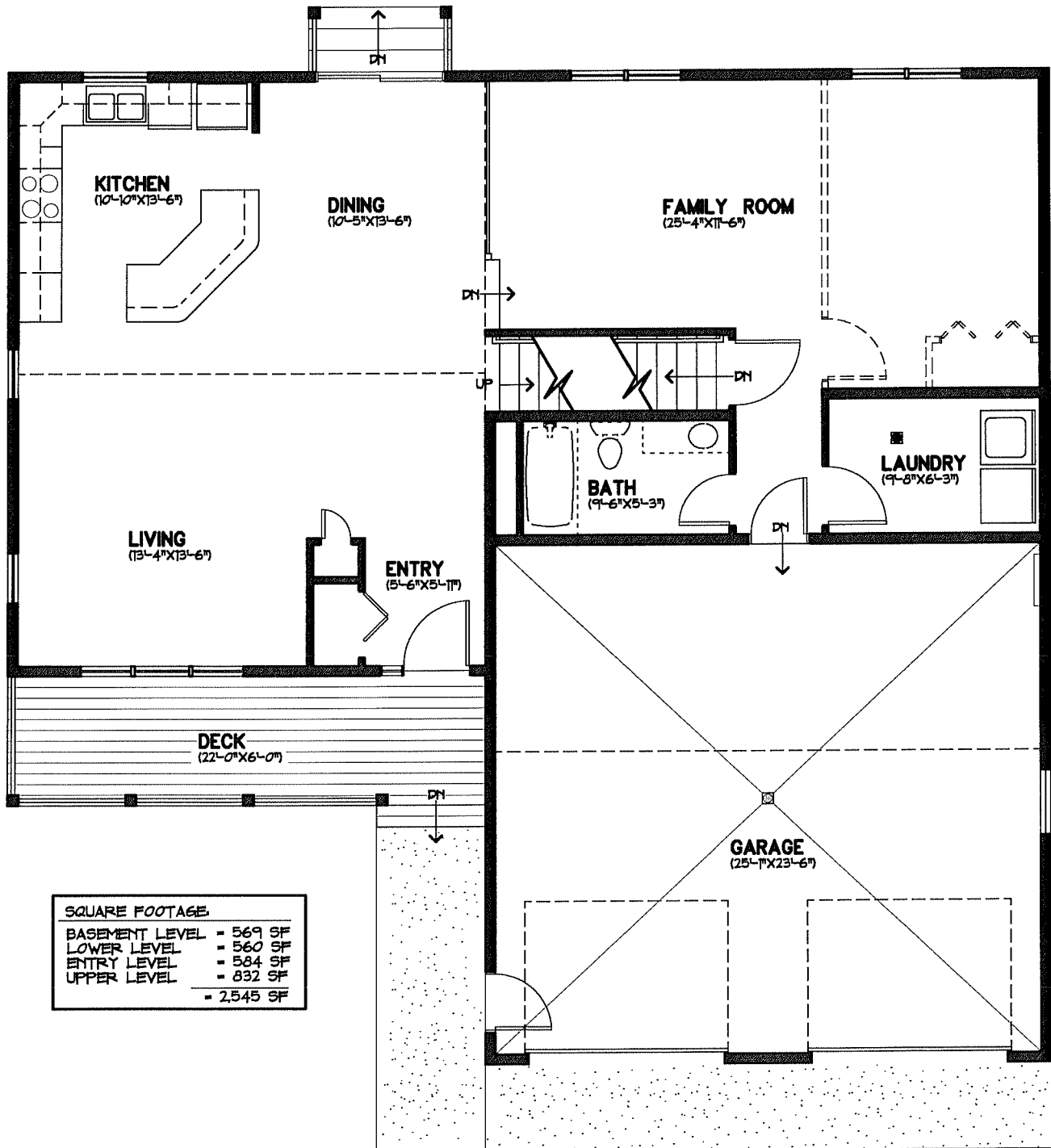
MMCDC HOMES - PINE BREEZE II

SHEET NUMBER:

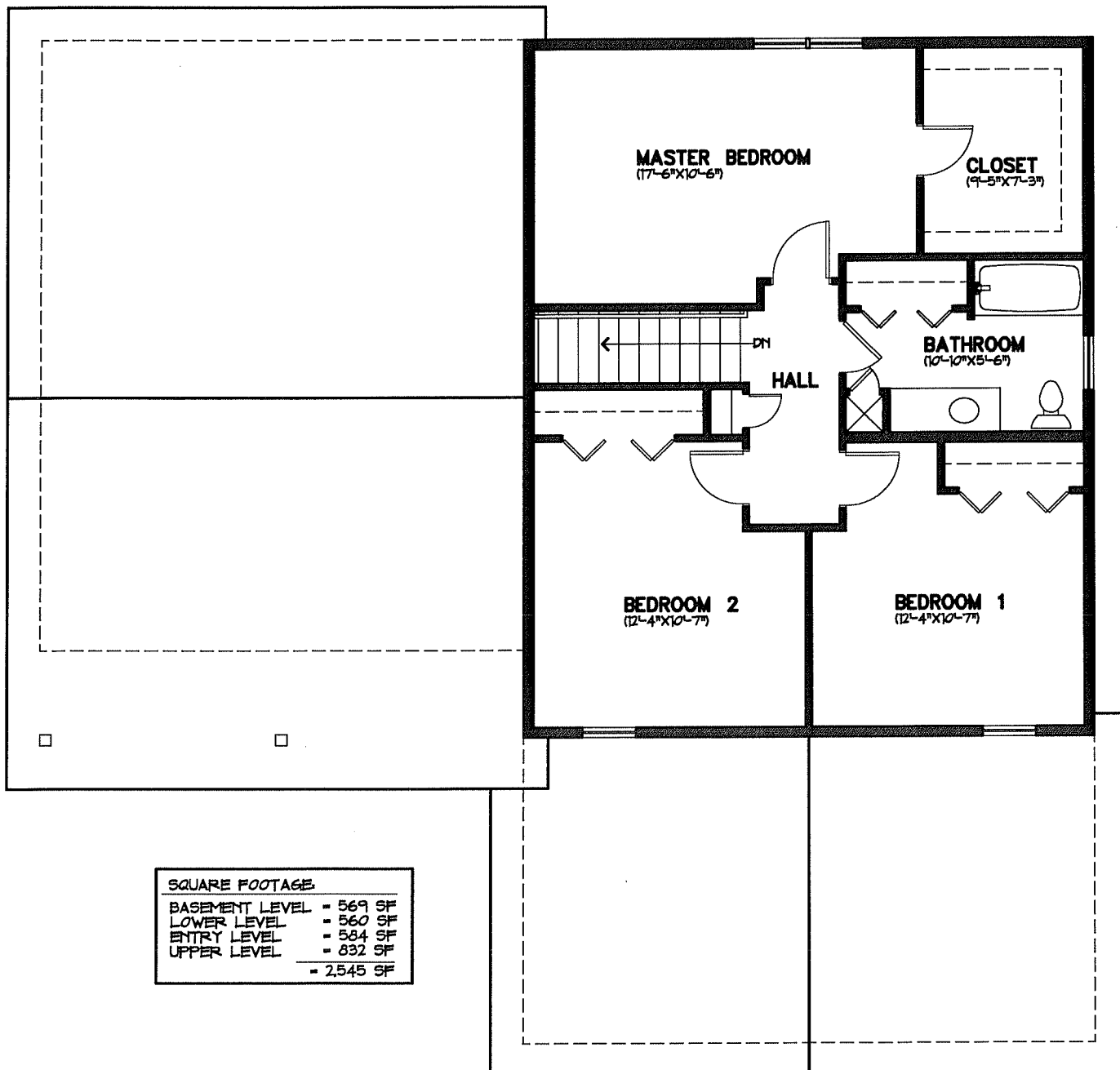
A-2



LOWER LEVEL PLAN



MAIN LEVEL PLAN



SQUARE FOOTAGE	
BASEMENT LEVEL	= 569 SF
LOWER LEVEL	= 560 SF
ENTRY LEVEL	= 584 SF
UPPER LEVEL	= 832 SF
	= 2,545 SF

UPPER LEVEL PLAN